

# BOARD OF SUPERVISORS

# MADISON COUNTY, MISSISSIPPI


Department of Engineering  
Dan Gaillet, P.E., County Engineer

3137 South Liberty Street, Canton, MS 39046  
Office (601) 790-2525 FAX (601) 859-3430

## MEMORANDUM

May 2, 2018

To: Sheila Jones, Supervisor, District I  
Trey Baxter, Supervisor, District II  
Gerald Steen, Supervisor, District III  
David Bishop, Supervisor, District IV  
Paul Griffin, Supervisor, District V

From: Dan Gaillet, P.E.   
County Engineer

Re: Sink Hole  
117 Stillhouse Creek Drive  
Stillhouse Creek Subdivision

A sink hole has formed due to the failure of a 42" pipe that carries roadway storm water from Stillhouse Creek Drive, across private property at 117 Stillhouse Creek Drive.

The Engineering Department has determined that the pipes have separated which is causing a dangerous sink hole. However, a full determination of damage will take place after authorization is granted to work on private property.

It is the recommendation of the Engineering Department that repairs be made to ensure that storm water is moved from point-to-point to prevent damage to the roadway and further damage to the storm water system.

Therefore, it is in the best interest of the County and the public's health, safety and welfare to make the repairs, based on:

- Separated storm water pipes; and
- Water is unable to flow freely off of Stillhouse Creek Drive; and
- A large sink hole has formed over the pipe failure.

---

SHEILA JONES  
District One

TREY BAXTER  
District Two

GERALD STEEN  
District Three

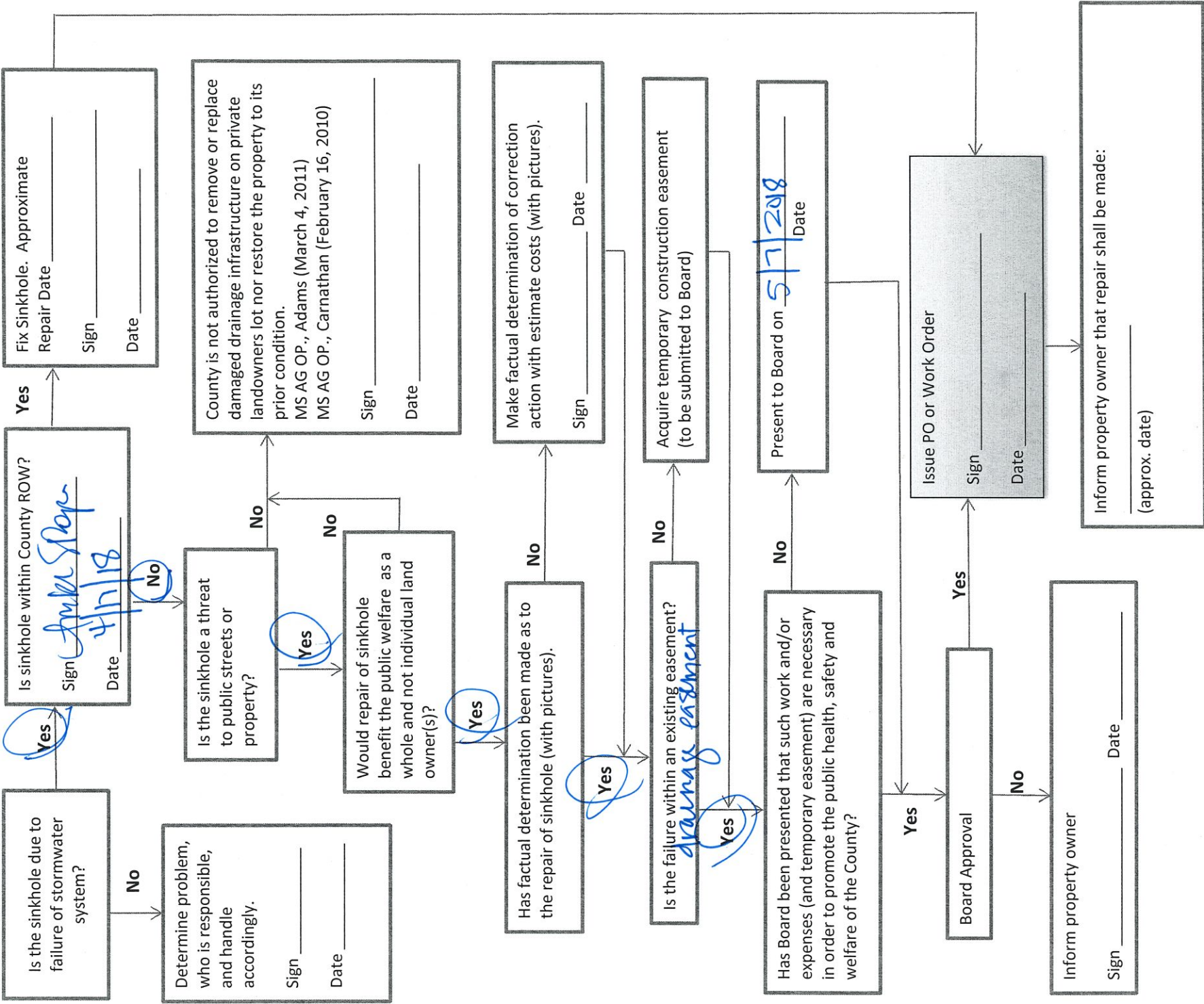
DAVID BISHOP  
District Four

PAUL GRIFFIN  
District Five

# SINKHOLE FLOW CHART

LOCATION: 17 Spilhouse Creek

DATE: 4/17/18



8046

**SURVEOR'S CERTIFICATE OF COMPLIANCE**

STATE OF MISSISSIPPI  
COUNTY OF MADISON  
I, Ronald C. McKeister, Professional Engineer and Surveyor, do hereby certify that the shown and described hereon are a true and correct representation of a survey to the accuracy designed in the subdivision regulations for Madison County, Mississippi.

Witness my signature this the 25<sup>th</sup> day of APRIL, 2008.

Ronald C. McKeister, Professional Engineer and Surveyor



Given under my hand and seal of office this 25<sup>th</sup> day of APRIL, 2008.  
Ronald C. McKeister, P.E., P.S.  
Surveyor Clerk

**ACKNOWLEDGMENT**

STATE OF MISSISSIPPI  
COUNTY OF MADISON  
Personally appeared before me, the undersigned officer in and for the jurisdiction aforesaid, the within named Blake Creek, who acknowledged to me that he is a member of Stillhouse Creek, LLC, a Mississippi Limited Liability Company, who acknowledged to me that he signed and delivered this plat and the certificate thereon, for and on behalf of said Stillhouse Creek, LLC, as its act and deed, other being authorized so to do, and Ronald C. McKeister, Professional Engineer and Surveyor, who acknowledged to me that he signed the certificate thereon as his own act and deed, on the day and year herein mentioned.

Witness my hand and seal of office this the 7<sup>th</sup> day of MAY, 2008.

By: *[Signature]*  
Surveyor Clerk



**FILING AND RECORDATION**

STATE OF MISSISSIPPI  
COUNTY OF MADISON  
I, Arthur Johnson, Chancery Clerk in and for said County and State, do hereby certify that the plat of STILLHOUSE CREEK, PHASE 1 was filed in my office on this date of 5/1/2008, and was duly recorded in File # 2008-1854-B of the records of maps and plats of land in Madison County, Mississippi.

2008  
day of MAY

By: *[Signature]*  
D.C.



**CERTIFICATE AND DESIGNATION OF OWNER**

STATE OF MISSISSIPPI  
COUNTY OF MADISON  
I, Blake Creek, Member of Stillhouse Creek, LLC, a Mississippi Limited Liability Company, do hereby certify that the development is the name of the plat as shown in the foregoing certificate of Ronald C. McKeister, Professional Engineer and Surveyor, and that as Member of said Stillhouse Creek, LLC, have acquired the same to be subdivided and platted as shown hereon, and hereby adopt this plat of said subdivision as the true act and deed of said limited liability company and have designated the same as STILLHOUSE CREEK, PHASE 1.  
All utilities, utility easements, streets, and street rights of way shall be dedicated for public use. All utilities, utility easements, and other easements are as designated and defined hereon.

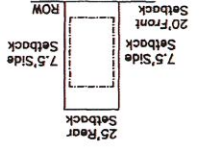
Witness my signature this the 25<sup>th</sup> day of APRIL, 2008.

Iron pins at lot corners as shown on this plat. Field work meets or exceeds the requirements for a Class "B" survey.

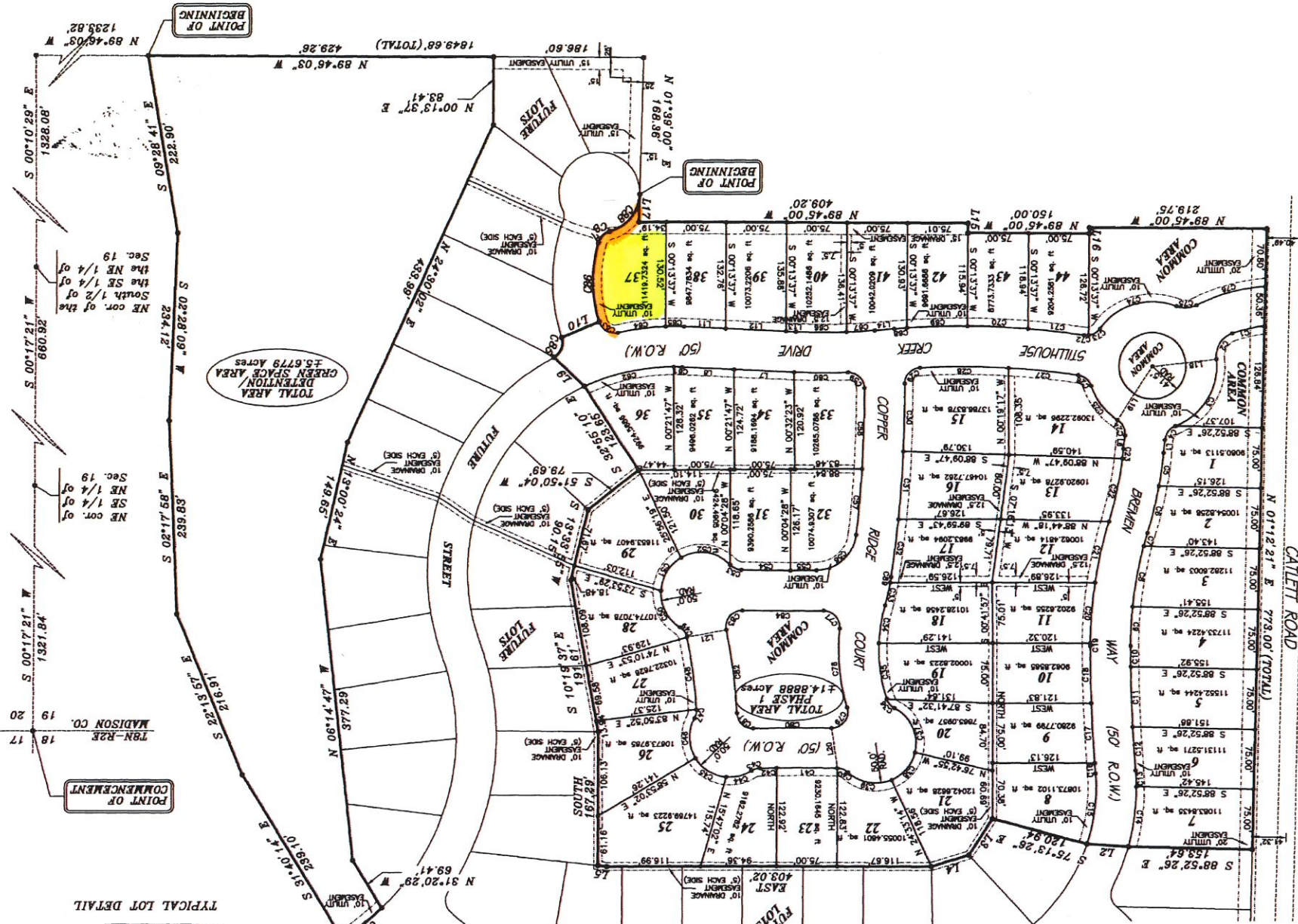


Scale: 1"=100'  
POB - Point of Beginning  
POC - Point of Commencement  
L.S.2441  
AND  
P.E. 9689  
R. C. McKEISTER  
ENGINEER  
STATE OF MISSISSIPPI

0 100 200  
Scale in Feet



TYPICAL LOT DETAIL



**COUNTY ENGINEER'S RECOMMENDATION**

STATE OF MISSISSIPPI  
COUNTY OF MADISON  
I have examined this plat and find it conforms to all conditions set forth on the preliminary plat as approved by the Board of Supervisors of Madison County, Mississippi and thus recommend that an approval of the Board of Supervisors be given on the day of \_\_\_\_\_, 2008.

**APPROVAL OF THE BOARD OF SUPERVISORS**

STATE OF MISSISSIPPI  
COUNTY OF MADISON  
I hereby certify that this is a true copy and that this plat was approved by the Board of Supervisors of Madison County in session on the day of \_\_\_\_\_, 2008.





# UTILITY CONSTRUCTORS, INC.

Utility & Commercial Contractors

## PROPOSAL

Madison County Board of Supervisors  
125 W. North Street  
Canton, MS 39046

April 25, 2018

Re: 42" C.P.P. Storm Drain Removal & Replacement  
117 Stillhouse  
Gluckstadt, MS

### Scope of work listed below:

Utility Constructors purpose to perform the following work:

Mobilize and Demobilize equipment, materials and manpower to the worksite.

Remove and Reinstall/Replace existing wood fence as required.

Excavate and remove and dispose of damaged section of C.P.P. (pipe) that has collapsed/separated (100' +/-).

From existing curb inlet to existing catch basin.

Connect new section of C.P.P. (pipe) to existing storm drain structure at two locations.

Pour concrete collars at connection points if needed.

Furnish and install 42" Corrugated Plastic Pipe (100' +/-).

Backfill and compact excavated area using insitu/native soil.

Apply seed (Bermuda), fertilizer and mulch to disturbed areas.

**TOTAL: \$49,932.00**

### Exclusions:

Property owner responsible for removing and reinstalling any and all landscaping as needed to perform work.

Property owner responsible for removing and reinstalling irrigation system if required.

Sod if required shall be by the property owner.

Any unforeseen underground obstructions are not included in proposal.

Relocation of any underground utilities are not included in proposal.

Accepted By

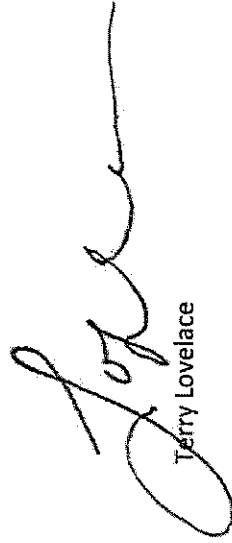
Company: \_\_\_\_\_

Signature: \_\_\_\_\_

Print: \_\_\_\_\_

Date: \_\_\_\_\_

P.O. No: \_\_\_\_\_



Terry Lovelace

Payment terms are net 30 days. Proposal valid for 30 days. Utility Constructors requires 7 days' notice to schedule manpower, equipment and One-Call's. Utility Interference and relocation to be by others.

